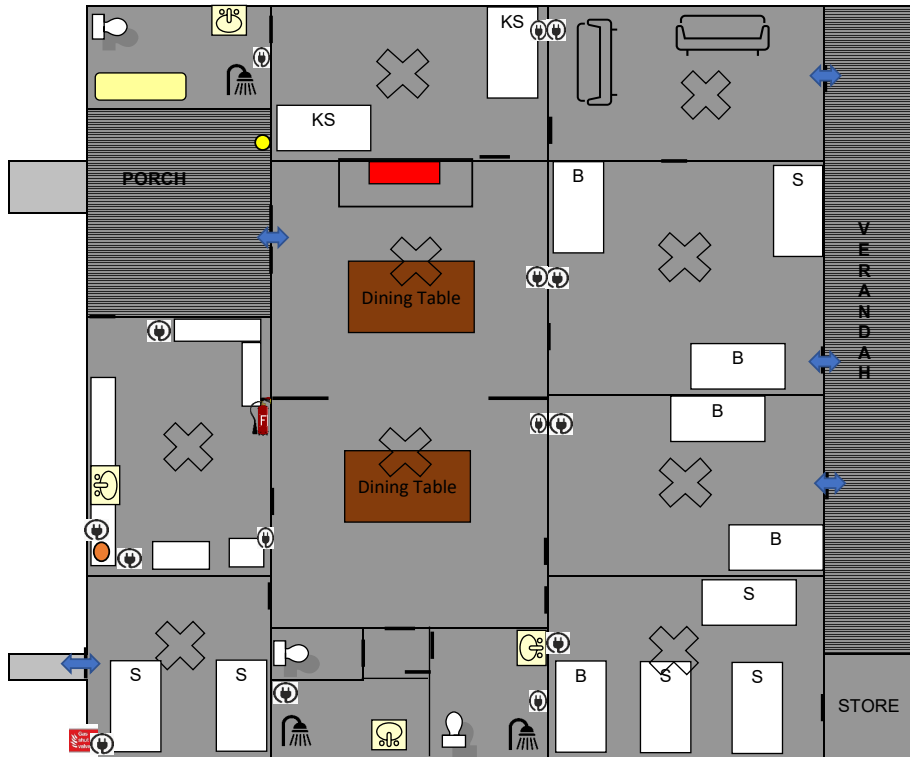


Kitchener Cottage Floor Plans & Emergency Information



Kitchener Cottage Standard
Sleeps 18

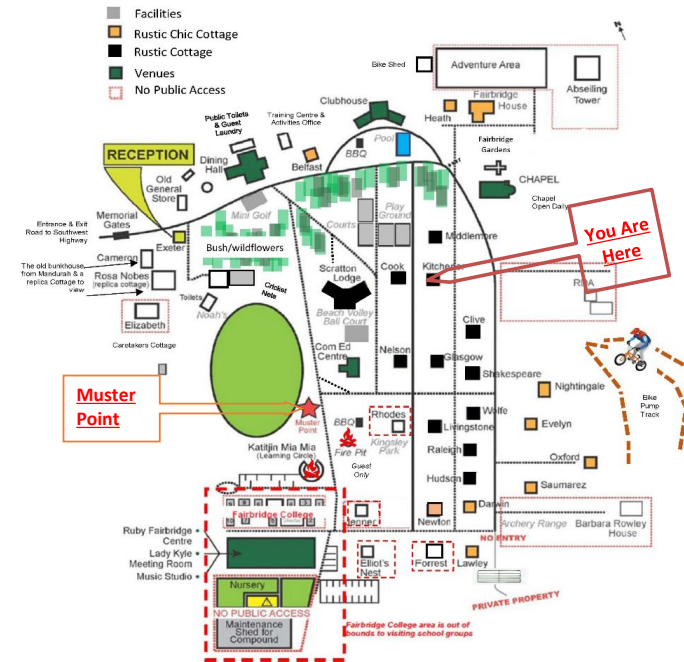
5 Bedroom
2 King Singles (KS)
6 Singles (S)
5 Bunks (B)
3 Bathrooms
3 Toilets
Wood Fireplace
Ceiling Fans

- Ceiling Fans
- Entrances & Exits
- Fire Blanket
- Fire Extinguisher
- Fire Place
- Gas Cut off Point
- Hot Water System
- Power Points
- Water Mains
- Switch Board

Reception Open
0830-1630
Closed at weekends
& Public Holidays

Caretakers - 0419 919 028
Emergency Only - Call out fees may apply

updated: 08/02/2024



Notes:

1. The Fire Pit is only for guests and is not available during summer and fire season.
2. Toilets near Cricket Nets are only for school camps and community functions.
3. The swimming pool is open for guests only.
4. Bike Shed is open for school camps only.

FAIRBRIDGE

If you discover a fire:

- Warn others in the immediate vicinity that a fire exists.
- If unable to extinguish the fire immediately evacuate the area, by following the emergency exit signs and proceed to the Assembly point at the Oval (see map).
- Inform the reception staff (9531 1177) ext 100 during office hours, or the Caretaker (0419 919 028) outside office hours, that a fire exists.
- If you are trained and confident that you are not placing yourself at risk of injury, attempt to extinguish the fire using appropriate fire extinguisher.
- If you are responsible for a visitor or contractor, you should ensure these persons follow the correct evacuation procedure.
- You should render assistance to injured personnel if capable but do not put yourself at risk.