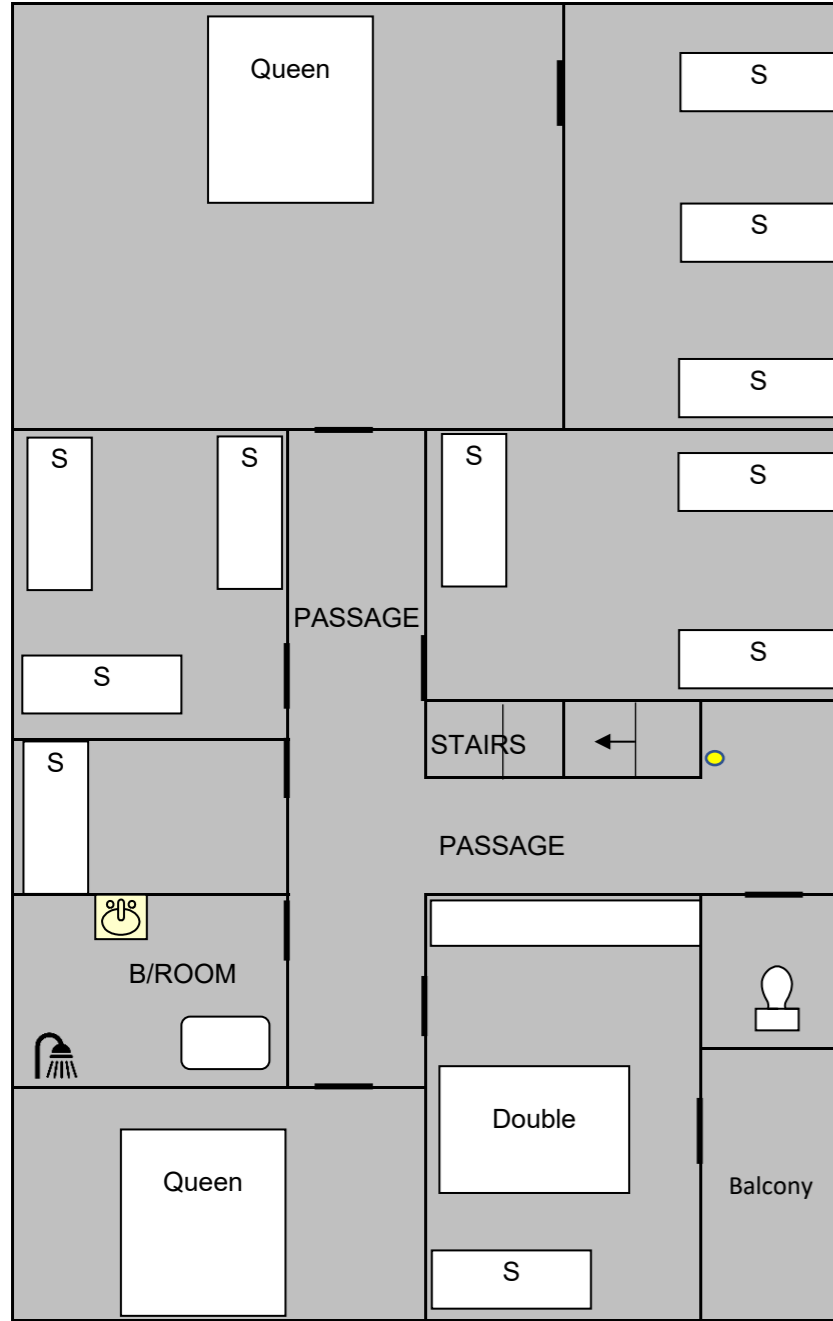
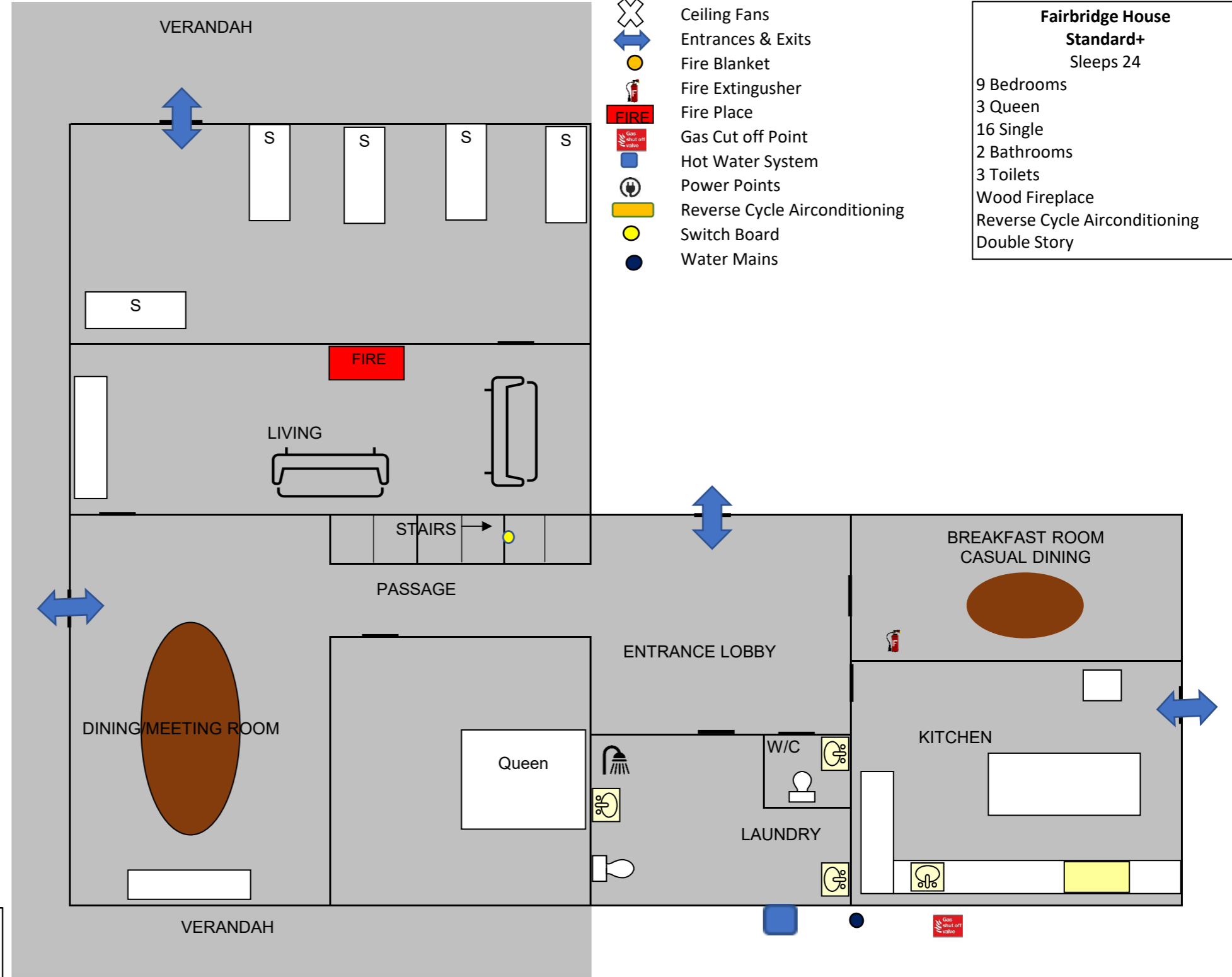


## Fairbridge House Floor Plan & Emergency Information

### UPSTAIRS



### DOWNSTAIRS



- Ceiling Fans
- Entrances & Exits
- Fire Blanket
- Fire Extinguisher
- Fire Place
- Gas Cut off Point
- Hot Water System
- Power Points
- Reverse Cycle Airconditioning
- Switch Board
- Water Mains

**Fairbridge House**  
**Standard+**  
 Sleeps 24

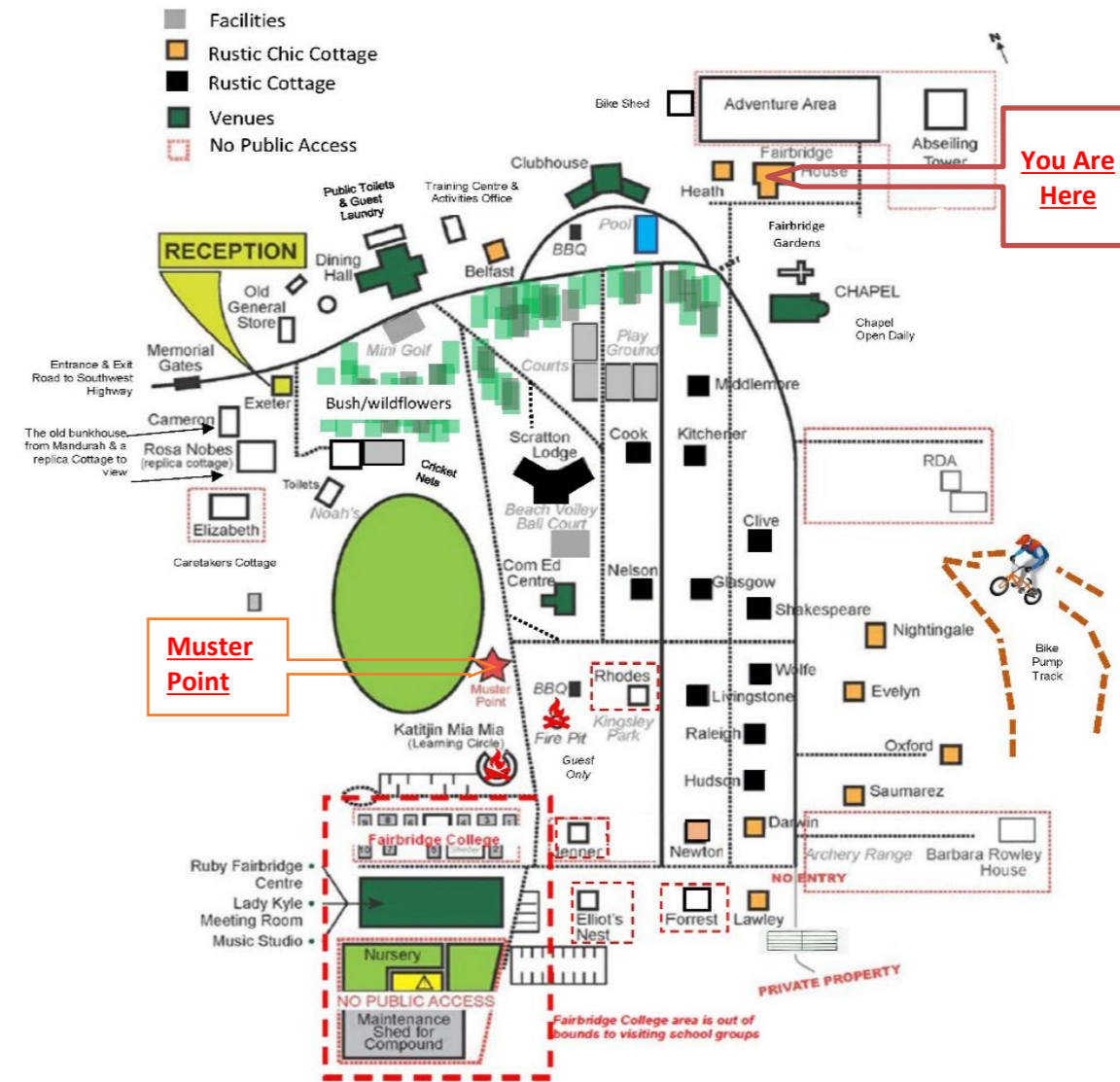
9 Bedrooms  
 3 Queen  
 16 Single  
 2 Bathrooms  
 3 Toilets  
 Wood Fireplace  
 Reverse Cycle Airconditioning  
 Double Story

Reception Open  
 0830-1630  
 Closed at weekends  
 & Public Holidays

Caretakers - 0419 919 028  
 Emergency Only - Call out fees may apply

**If you discover a fire:**

- Warn others in the immediate vicinity that a fire exists.
- If unable to extinguish the fire immediately evacuate the area, by following the emergency exit signs and proceed to the Assembly point at the Oval (see map).
- Inform the reception staff (9531 1177) ext 100 during office hours, or the Caretaker (0419 919 028) outside office hours, that a fire exists.
- If you are trained and confident that you are not placing yourself at risk of injury, attempt to extinguish the fire using appropriate fire extinguisher.
- If you are responsible for a visitor or contractor, you should ensure these persons follow the correct evacuation procedure.
- You should render assistance to injured personnel if capable but do not put yourself at risk.



**Notes:**

1. The Fire Pit is only for guests and is not available during summer and fire season.
2. Toilets near Cricket Nets are only for school camps and community functions.
3. The swimming pool is open for guests only.
4. Bike Shed is open for school camps only.